

High Efficiency Ion Exchange

for Arsenic and Nitrate

Envirogen Technologies, Inc.'s patented high-efficiency ion exchange treatment system (SimPACK™) consistently removes contaminants to levels below the Maximum Contaminant Level (MCL) in drinking water.

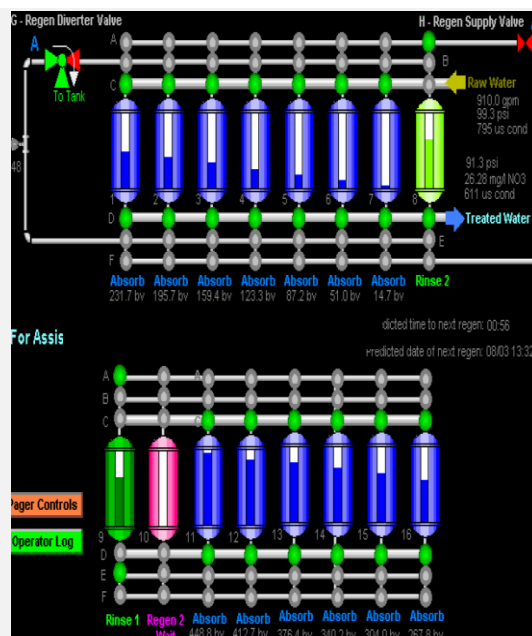
- On-site regeneration
- Waste rates as low as 0.05%
- Low energy requirements
- No pH adjustment needed
- Prolonged media life
- NSF approved
- Rapidly deployable
- Fully automatic operations
- Continuous flow – no interruption in service
- Consistent water quality
- Residuals management



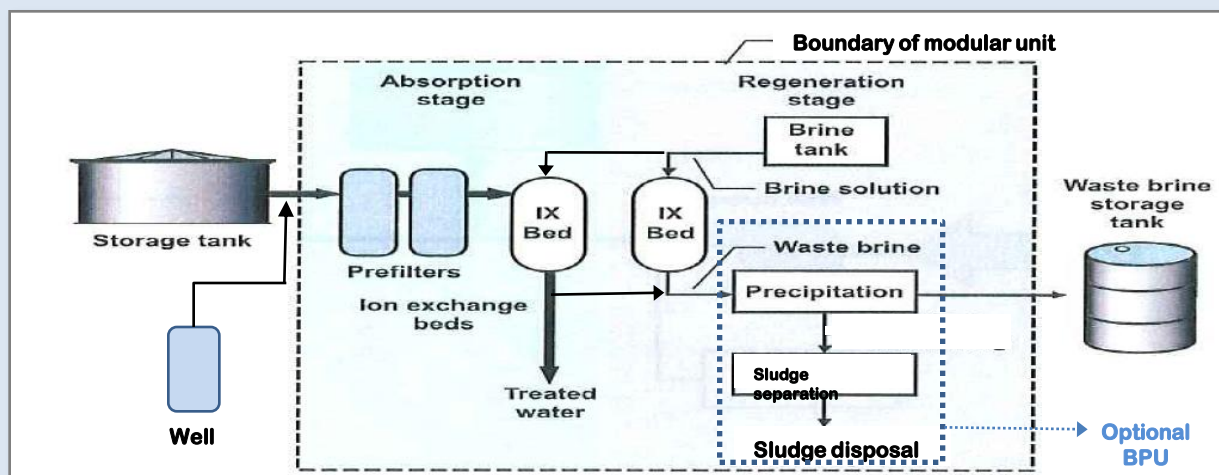
Envirogen Technologies, Inc.'s High Efficiency Ion Exchange System

Our multi-bed, PLC controlled treatment concept uses 16 or more resin vessels (depending upon flow), each in a different stage of the treatment/regeneration process.

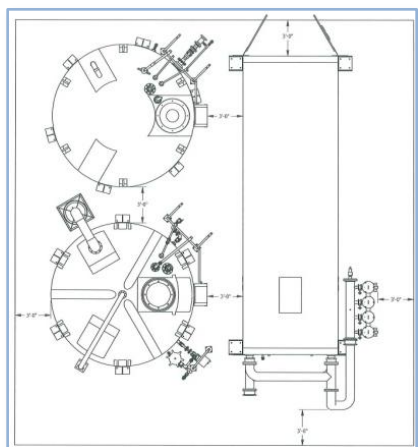
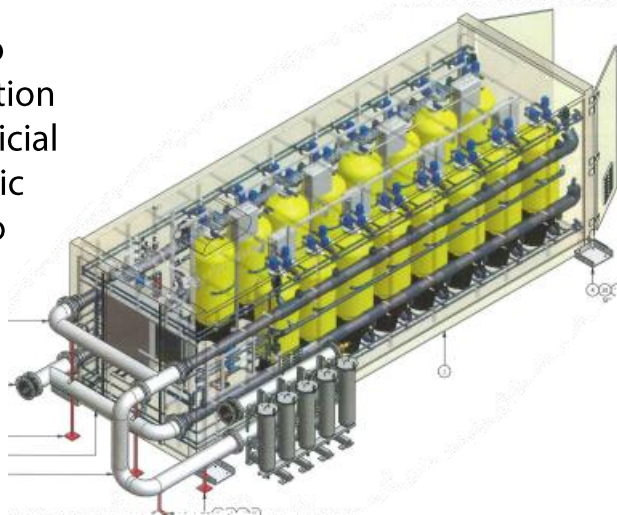
Each vessel can be operated until contaminant breakthrough without reducing treated water quality, thereby allowing maximum bed utilization through longer run times before regeneration. This results in decreased salt usage, lower waste production and, therefore, lower operating costs.



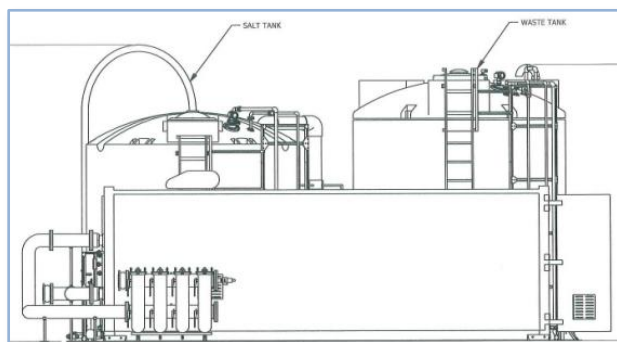
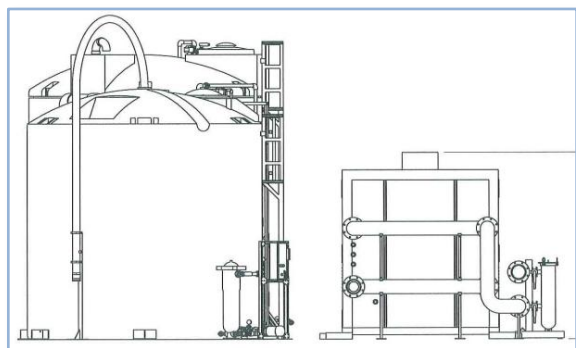
Our SimPACK™ system is an on-site regenerable system that uses a concentrated salt solution to restore depleted resin. This waste salt solution, containing the removed contaminant, can often be discharged to a sanitary sewer or storage pond for evaporation. In cases where this is not practical or permitted, the concentrated waste is stored for periodic hauling to a disposal site.



Our SimPACK™ system can be configured to remove a target contaminant or a combination of contaminants. This is an extremely beneficial feature for applications with multiple anionic contaminants, which eliminates the need to employ multiple treatment technologies.



Envirogen Technologies has numerous systems in operation with treatment capacities ranging from 200 to more than 6,000 gpm.



Envirogen Technologies' SimPACK™ System Configurations

	Flow Rate (gpm)		
	200-500	500-1,000	1,300+
Dimensions (approx)	8' W x 25' L x 9' H	10' W x 35' L x 9' H	10' W x 40' L x 9' H
Prefilters	1 for a 4-unit module	1 for 4- or 5-unit modules	3 for a 4-unit module
BPUs (optional)	1	1	1
Number of vessels	3	16	18
Pipe size (inch)	1.5	6	18

Additional Removal Technologies & Services

- FlexSorb™ and HyperSorb™ adsorptive media systems
- NSF/ANSI-61 certified systems
- Low flows – starting at 5 gpm
- Flexible, modular, scalable systems
- Media handling and disposal
- Off-site media regeneration at our central facility

For more information:

www.envirogen.com

info@envirogen.com

877.312.8950

